



**HARVARD**  
MEDICAL SCHOOL

61st Annual Update

# OBSTETRICS & GYNECOLOGY 2024

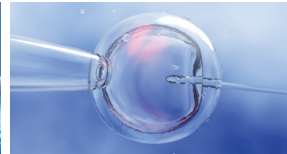
**MARCH 7 – 12, 2025**

**NEW**

Attend **ONLINE** • LIVE STREAMING or **IN PERSON** • BOSTON, MA



- Clinical Obstetrics
- Infertility Care
- Management of Difficult Deliveries
- Urogynecology
- Minimally Invasive Gynecologic Surgery
- Adolescent Gynecology
- Menopause Management
- Reproductive Endocrinology
- Management of High-Risk Patients
- Gynecologic Oncology in General Practice



Earn up to  
44.00 AMA PRA  
Category 1 Credits™



**ATTEND ONLINE or IN PERSON**



**COMPREHENSIVE UPDATES for STATE-OF-THE-ART CARE**

- New approaches to common clinical challenges
- Guidance for challenging conditions
- Comprehensive treatment updates
- Expanded options for diagnostics
- New medical technologies
- Imaging advances and implications
- New and emerging therapies
- Best practices for high-risk patients



For **PHYSICIANS**,  
NPs, PAs, APNs

Register at [OBGYN.HMSCME.com](https://www.obgyn.hmscme.com)

This program is among the highest-rated Harvard Medical School CME courses

Mobolaji O. Ajao, MD, MPH  
Ross S. Berkowitz, MD  
Mark D. Hornstein, MD

Vatché A. Minassian, MD, MPH  
Julianna Schantz-Dunn, MD, MPH  
Louise E. Wilkins-Haug, MD, PhD

Nawal M. Nour, MD, MPH, MBA

**Brigham and Women's Hospital**  
Founding Member, Mass General Brigham

# COMPREHENSIVE UPDATES FOR STATE-OF-THE-ART CARE



## You Can Choose Your Learning Environment: ONLINE or IN PERSON

**ONLINE** for LIVE STREAMING education and online Q&A with faculty.

**IN PERSON** in Boston, MA at the Fairmont Copley Plaza hotel. See website for details. Faculty provide dedicated time for Q&A with participants.

**RECORDINGS** of all sessions will be made available online to all participants, where you can view them, at your convenience, for 60 days following the conclusion of this program.

### EDUCATION FOR

- Physicians specializing in obstetrics and gynecology, including:
  - Obstetricians
  - Gynecologists
  - Perinatologists
  - Urogynecologists
  - Gynecologic Oncologists
  - Reproductive Endocrinologists
  - Infertility Specialists
- Family Physicians
- Nurse Practitioners
- Physician Assistants

This acclaimed program offers problem-oriented lectures, case-based interactive discussions, and in-depth clinical skills updates. Sessions are led by the top clinical faculty at Harvard Medical School and Brigham and Women's Hospital — experienced practitioners, all at the forefront of their respective specialties.

- Managing patients with prior preterm birth, labor complications, or preeclampsia
- Abortion and early pregnancy loss
- Maternal mental health
- Fetal anatomy
- Gynecologic pelvic pain
- Hysterectomy best practices
- Infertility workup updates
- Menopause management in 2025
- Cervical cancer prevention and vulvar lesions
- Surgical management of endometriosis
- Placenta accreta syndrome
- Hemorrhage best practices
- Gynecologic cancers in resource-limited regions
- Ovulation induction challenges
- IVF updates
- New avenues for fetal therapy
- Obesity, diabetes, and pregnancy
- Interconception care
- Overactive bladder management
- Endometrial and cervical cancer management
- Care of non-binary or trans patients
- Osteoporosis treatment
- Gestational trophoblastic disease
- Management of the adnexal mass
- C-sections and labor inductions
- Impact of obesity on gynecologic oncology care
- Recurrent pregnancy loss: diagnosis, treatment, and prevention
- Management of PCOS, uterine fibroids, and endometriosis
- Postpartum hypertension
- Preventing and managing laparoscopic complications
- Counseling patients about cancer screening, testing, and risk reduction
- Pediatric and adolescent gynecologic cases
- Treatment of abnormal uterine bleeding
- Robotic surgery in benign gynecology
- Urogynecology for the general OB/GYN
- Respectful maternity care



## Course Director

**Nawal M. Nour, MD, MPH, MBA**

*Chair, Department of Obstetrics and Gynecology, Brigham and Women's Hospital  
Kate Macy Ladd Professorship,  
Harvard Medical School*

## THE PARTICIPANT EXPERIENCE

Year after year, participants report that interactive, master clinician-led education has advanced their ability to approach the complex and challenging issues seen in their day-to-day practice. With a mix of case-based, problem-solving, and discussion-based learning, participants can rely on this course to provide critically important updates and insights.

# Clinical Obstetrics

## Comprehensive Updates

Twins, placenta accreta, and other high-risk pregnancies

Labor planning, induction, breech deliveries, and other complex delivery issues

Managing weight gain in pregnancy

Prenatal genetic screening and diagnosis

Maternal hypertension

Practical update of STIs

Depression during and after pregnancy: how to detect and resources for management

Optimizing the next pregnancy after preterm delivery, hypertension, cervical insufficiency, and stillbirth

Postpartum care and maternal health

Equitable abortion care

## PROGRAM DIRECTORS

### Louise E. Wilkins-Haug, MD, PhD

Director, Center for Fetal Medicine, Division of Reproductive Genetics; Division Director, Maternal-Fetal Medicine, Brigham and Women's Hospital Professor, Harvard Medical School

### Julianna Schantz-Dunn, MD, MPH

Medical Director, Obstetrics Clinic, Brigham and Women's Hospital Assistant Professor, Harvard Medical School

## Friday, March 7

### Updates in Clinical Obstetrics

7:55 – 8:00	<b>Welcome - Clinical Obstetrics</b> Julianna Schantz-Dunn, MD, MPH
8:00 – 8:35	<b>Respectful Maternity Care</b> Chiamaka Onwuzurike, MD, MPH
8:35 – 8:45	<b>Q/A</b>
8:45 – 9:20	<b>Practical Update of STIs and Management of Special Clinical Situations</b> Sharlay Butler, MD, MPH
9:20 – 9:30	<b>Q/A</b>
9:30 – 9:40	Break
9:40 – 10:15	<b>Advances in the Management of Perinatal Depression</b> Nicole Smith, MD, MPH
10:15 – 10:25	<b>Q/A</b>
10:25 – 11:00	<b>Successful Management of the Second Stage of Labor</b> James Greenberg, MD
11:00 – 11:10	<b>Q/A</b>
11:10 – 12:00	<b>OB Panel</b> Drs. Onwuzurike, Butler, Smith, and Greenberg
12:00 – 1:00	Break*
1:00 – 1:30	<b>Management of Breech Presentation</b> Barbara Wilkinson, MD, MA
1:30 – 1:40	<b>Q/A</b>
1:40 – 2:10	<b>Changing the Outcomes for Multifetal Pregnancies</b> Carolina Bibbo, MD
2:10 – 2:20	<b>Q/A</b>
2:20 – 2:30	Break
2:30 – 3:05	<b>Medical Management of Abortion and Early Pregnancy Loss</b> Kari Braaten, MD, MPH
3:05 – 3:15	<b>Q/A</b>
3:15 – 3:45	<b>Management of Pregnancy of Unknown Location</b> Alisa Goldberg, MD, MPH
3:45 – 3:55	<b>Q/A</b>
3:55 – 4:55	<b>OB Panel</b> Drs. Wilkinon, Bibbo, Braaten, and Goldberg

## Saturday, March 8

### Updates in Maternal-Fetal Medicine

7:55 – 8:00	<b>Welcome - Maternal-Fetal Medicine</b> Louise Wilkins-Haug, MD, PhD
8:00 – 8:35	<b>New Avenues for Fetal Therapy</b> Alireza Shamshirsaz, MD
8:35 – 8:45	<b>Q/A</b>
8:45 – 9:20	<b>Should Fetal Anatomy Be Surveyed in the First Trimester?</b> Rosemary Reiss, MD
9:20 – 9:30	<b>Q/A</b>
9:30 – 9:40	Break
9:40 – 10:15	<b>Placenta Accreta Spectrum: What Every OB/GYN Should Know</b> Daniela Carusi, MD, MSc
10:15 – 10:25	<b>Q/A</b>
10:25 – 11:00	<b>Hemorrhage Management on L&amp;D</b> Michaela Farber, MD, MS
11:00 – 11:10	<b>Q/A</b>
11:10 – 12:00	<b>MFM Panel</b> Drs. Shamshirsaz, Reiss, Carusi, and Farber
12:00 – 1:00	Break*
1:00 – 1:30	<b>Preterm Birth and Short Cervix</b> Saba Berhie, MD
1:30 – 1:40	<b>Q/A</b>
1:40 – 2:10	<b>Management of Obesity and Diabetes in Your OB Practice</b> Chloe Zera, MD, MPH
2:10 – 2:20	<b>Q/A</b>
2:20 – 2:30	Break
2:30 – 3:05	<b>Hypertension During Pregnancy</b> Katherine Economy, MD
3:05 – 3:10	<b>Q/A</b>
3:10 – 3:40	<b>Care for Hypertensive Persons After Birth</b> Ann Celi, MD
3:40 – 3:50	<b>Q/A</b>
3:50 – 4:30	<b>MFM Panel</b> Drs. Berhie, Zera, Economy, and Celi

\*There are many convenient and varied lunch options within a short walking distance of the in-person course venue.

Program changes/substitutions may be made without notice. To view the most up-to-date version of the course program, please visit the course website.

**CUSTOMIZE  
YOUR LEARNING  
EXPERIENCE**

**You can participate in one, two, or  
all three segments of this program.**



# Minimally Invasive Gynecologic Surgery – Urogynecology – Gynecologic Oncology

## Comprehensive Updates

Fibroids, sarcomas, and patient counseling
Surgical management of fibroids
Complications in laparoscopic surgery and their management
Gynecologic pelvic pain: etiologies, diagnosis, algorithms for referral and treatment
Diagnosis of overactive bladder
Robotic surgery tips and tricks
Conservative and advanced management of overactive bladder
Management of urinary tract injuries during surgery
Best practices for vaginal hysterectomy
Tools to prevent and treat surgical complications
How to manage ovarian masses
Vulvar lesions: diagnosis and treatment
Preventing cervical cancer
Care of women with gyn cancers in resource-limited regions
Fertility-sparing options in uterine neoplasia
The latest in trophoblastic disease
Impact of obesity on gynecologic oncology care
Counseling patients about cancer screening and risk reduction

## Sunday, March 9

### Minimally Invasive Gynecologic Surgery

7:55 – 8:00	<b>Welcome - Minimally Invasive Gynecologic Surgery (MIGS)</b> Mobolaji Ajao, MD, MPH
8:00 – 8:35	<b>Specimen Extraction in Laparoscopic Surgery: Tips and Tricks</b> Mobolaji Ajao, MD, MPH
8:35 – 8:45	<b>Q/A</b>
8:45 – 9:20	<b>Gynecologic Pelvic Pain: General Assessment, Tips and Tricks, Novel Therapies</b> Louise King, MD, JD
9:20 – 9:30	<b>Q/A</b>
9:30 – 9:40	Break
9:40 – 10:15	<b>Robotic Surgery in Benign Gynecology: Tips, Tricks, and Troubleshooting</b> Golnaz Namazi, MD
10:15 – 10:25	<b>Q/A</b>
10:25 – 11:00	<b>Total Laparoscopic Hysterectomy: Ten Steps Toward a Successful Procedure</b> Jon Einarsson, MD, MPH, PhD
11:00 – 11:10	<b>Q/A</b>
11:10 – 12:00	<b>Open Forum with MIGS Faculty</b> Drs. Ajao, King, Namazi, and Einarsson
12:00 – 1:00	Break*
<b>Urogynecology</b>	
1:00 – 1:05	<b>Welcome - Urogynecology</b> Vatché Minassian, MD, MPH
1:05 – 1:30	<b>Overview of Contemporary Overactive Bladder Management</b> Edward Kim, MD, MPH
1:30 – 1:40	<b>Q/A</b>
1:40 – 2:10	<b>Management of Urinary Tract Injuries During Gyn Surgery</b> Yu Brian Zheng, MD
2:10 – 2:20	<b>Q/A</b>
2:20 – 2:30	Break
2:30 – 3:05	<b>Vaginal Hysterectomy: Best Practices</b> Vatché Minassian, MD, MPH
3:05 – 3:10	<b>Q/A</b>
3:10 – 3:40	<b>Updates on Evaluation and Management of Interstitial Cystitis</b> Jeannine Miranne, MD, MS
3:40 – 3:50	<b>Q/A</b>
3:50 – 4:30	<b>Open Forum with Urogynecology Faculty</b> Drs. Kim, Zheng, Minassian, and Miranne

## Monday, March 10

### Gynecologic Oncology in the General Practice of Obstetrics and Gynecology

7:55 – 8:00	<b>Welcome - Gynecologic Oncology</b> Ross Berkowitz, MD
8:00 – 8:35	<b>Management of Abnormal Cervical Cancer Testing</b> Stephanie Alimena, MD
8:35 – 8:45	<b>Q/A</b>
8:45 – 9:20	<b>Should You “Guess” the Lesion? How to Differentiate, Treat, or Refer</b> Colleen Feltmate, MD
9:20 – 9:30	<b>Q/A</b>
9:30 – 9:40	Break
9:40 – 10:15	<b>Endo’ the Line: Orchestrating the Battle Against Endometrial Neoplasia</b> Michelle Davis, MD
10:15 – 10:25	<b>Q/A</b>
10:25 – 11:00	<b>Contemporary Approaches to the Management of GTN</b> Ross Berkowitz, MD
11:00 – 11:10	<b>Q/A</b>
11:10 – 12:00	<b>Gyn/Onc Panel Discussion</b> Drs. Alimena, Feltmate, Davis, and Berkowitz
12:00 – 1:00	Break*
1:00 – 1:35	<b>The Adnexal Mass: Observe, Remove, or Refer</b> Taymaa May, MD, MSc
1:35 – 1:45	<b>Q/A</b>
1:45 – 2:20	<b>What’s My Risk? Counseling Women About Screening, Testing, and Risk-Reduction Strategies for Ovarian and Uterine Cancers</b> Jessica St. Laurent, MD
2:20 – 2:30	<b>Q/A</b>
2:30 – 2:40	Break
2:40 – 3:15	<b>Challenges to the Care of Women with Gynecologic Cancers in Resource-Limited Regions</b> Annekathryn Goodman, MD, MS, MPH
3:15 – 3:25	<b>Q/A</b>
3:25 – 4:00	<b>Weight Matters: The Impact of Obesity on Gynecologic Oncology Care</b> Neil Horowitz, MD
4:00 – 4:10	<b>Q/A</b>
4:10 – 5:00	<b>Gyn/Onc Panel Discussion</b> Drs. May, St. Laurent, Goodman, and Horowitz

## PROGRAM DIRECTORS

### Mobolaji O. Ajao, MD, MPH

Director, Minimally Invasive Gynecologic Surgery,  
Brigham and Women’s Hospital  
Assistant Professor, Harvard Medical School

### Vatché A. Minassian, MD, MPH

Director, Division of Urogynecology,  
Brigham and Women’s Hospital  
Associate Professor, Harvard Medical School

### Ross S. Berkowitz, MD

Director Emeritus, Division of Gynecologic Oncology,  
Brigham and Women’s Hospital  
William H. Baker Professor, Harvard Medical School

# Infertility, Menopause, and Reproductive Endocrinology

## Comprehensive Updates

The latest cost-effective workup for infertility

Ovulation induction

Guidance on when to make a referral for IVF

Recurrent pregnancy loss

Common reproductive endocrine disorders

Genetics and infertility

Egg freezing for women who wish to preserve fertility options

Hyperandrogenism and polycystic ovary syndrome

Congenital anomalies of the reproductive tract

Managing the health concerns of menopausal women

Sexual dysfunction in women

Osteoporosis

Management of fibroids

Endometriosis-associated pelvic pain

Pediatric and adolescent gynecology, and care of non-binary patients

## PROGRAM DIRECTOR

### Mark D. Hornstein, MD

Director, Division of Reproductive Endocrinology, Brigham and Women's Hospital  
Kosasa Distinguished Professor, Harvard Medical School

## Tuesday, March 11

### Infertility, Menopause, and Reproductive Endocrinology

7:55 – 8:00	<b>Welcome - Infertility, Menopause, and Reproductive Endocrinology, Part I</b> Mark Hornstein, MD
8:00 – 8:45	<b>Important Updates for the Infertility Workup</b> Rachel Ashby, MD
8:45 – 9:30	<b>Navigating Expanded Options for Ovulation Induction</b> Elizabeth Ginsburg, MD
9:30 – 9:40	Break
9:40 – 10:25	<b>The Role of IVF in Contemporary Practice</b> Janis Fox, MD
10:25 – 11:05	<b>The Role of the Genetic Counselor in the Infertility Evaluation</b> Lori Dobson, MS, CGC
11:05 – 12:00	<b>Open Forum with REI Faculty</b> Drs. Ashby, Ginsburg, Fox, and Lori Dobson, MS, CGC
12:00 – 1:00	Break*
1:00 – 1:05	<b>Welcome - Infertility, Menopause, and Reproductive Endocrinology, Part II</b> Mark Hornstein, MD
1:05 – 1:50	<b>Abnormal Uterine Bleeding</b> Adeline Boatin, MD, MPH
1:50 – 2:35	<b>Advances in the Diagnosis, Treatment, and Prevention of Recurrent Pregnancy Loss</b> S. Zev Williams, MD, PhD
2:35 – 2:45	Break
2:45 – 3:30	<b>Cases in Pediatric and Adolescent Gynecology</b> Marc Laufer, MD
3:30 – 4:15	<b>Care of Non-binary or Trans Patients</b> Frances Grimstad, MD, MS
4:15 – 5:10	<b>Open Forum with REI Faculty</b> Drs. Boatin, Williams, Laufer, and Grimstad

## Wednesday, March 12

### Infertility, Menopause, and Reproductive Endocrinology

7:55 – 8:00	<b>Welcome - Infertility, Menopause, and Reproductive Endocrinology, Part III</b> Mark Hornstein, MD
8:00 – 8:45	<b>Optimizing the Treatment of Menopausal Symptoms</b> Jan Shifren, MD
8:45 – 9:30	<b>Menopausal Hormone Therapy: Benefits, Risks, and Myths</b> Kathryn Martin, MD
9:30 – 9:40	Break
9:40 – 10:25	<b>Simplifying the Diagnosis and Treatment of PCOS</b> Robert Barbieri, MD
10:25 – 11:10	<b>Open Forum with REI Faculty</b> Drs. Shifren, Martin, and Barbieri
11:10 – 12:00	<b>A Practical Approach to the Management of Endometriosis-Associated Pelvic Pain</b> Mark Hornstein, MD
12:00 – 1:00	Break*
1:00 – 1:45	<b>An Update on Uterine Fibroids</b> John Petrozza, MD
1:45 – 2:30	<b>Current Issues in the Management of Postmenopausal Osteoporosis</b> Benjamin Leder, MD
2:30 – 3:15	<b>Open Forum with REI Faculty</b> Drs. Hornstein, Petrozza, and Leder



## Harvard Medical School Faculty

### Clinical Obstetrics

Saba Berhie, MD  
Carolina Bibbo, MD  
Kari Braaten, MD, MPH  
Sharlay Butler, MD, MPH  
Daniela Carusi, MD, MSc  
Ann Celi, MD  
Katherine Economy, MD  
Michaela Farber, MD, MS  
Alisa Goldberg, MD, MPH  
James Greenberg, MD  
Chiamaka Onwuzurike, MD, MPH  
Rosemary Reiss, MD  
Julianna Schantz-Dunn, MD, MPH

Alireza Shamshirsaz, MD  
Nicole Smith, MD, MPH  
Louise Wilkins-Haug, MD, PhD  
Barbara Wilkinson, MD, MA  
Chloe Zera, MD, MPH

### Gynecologic Oncology, Urogynecology, and Minimally Invasive Gynecologic Surgery

Mobolaji Ajao, MD, MPH  
Stephanie Alimena, MD  
Ross Berkowitz, MD  
Michelle Davis, MD  
Jon Einarsson, MD, MPH, PhD  
Colleen Feltmate, MD  
Annekathryn Goodman, MD, MS, MPH

Neil Horowitz, MD  
Edward Kim, MD, MPH  
Louise King, MD, JD  
Taymaa May, MD, MSc  
Vatché Minassian, MD, MPH  
Jeannine Miranne, MD, MS  
Golnaz Namazi, MD  
Jessica St. Laurent, MD  
Yu Brian Zheng, MD

### Infertility, Menopause, and Reproductive Endocrinology

Rachel Ashby, MD  
Robert Barbieri, MD  
Adeline Boatin, MD, MPH  
Lori Dobson, MS, CGC  
Janis Fox, MD

Elizabeth Ginsburg, MD  
Frances Grimstad, MD, MS  
Mark Hornstein, MD  
Marc Laufer, MD  
Benjamin Leder, MD  
Kathryn Martin, MD  
John Petrozza, MD  
Jan Shifren, MD

### Guest Faculty

S. Zev Williams, MD, PhD  
Wendy D. Havens Associate Professor of Women's Health; Chief, Division of Reproductive Endocrinology and Infertility, Columbia University Irving Medical Center

# LEARNING OBJECTIVES

## Clinical Obstetrics:

- Review evidence for interconception, antenatal surveillance and risk-reducing strategies, and suggest quality measures for care.
- Analyze the current management of maternal complications of pregnancy.
- Outline the role that obstetricians play in adverse neonatal outcomes.
- Develop treatment plans for the management of antepartum complications, including obstetric emergencies, cervical incompetence, and preterm labor.

## Minimally Invasive Gynecologic Surgery, Urogynecology, and Gynecologic Oncology:

- Discuss practical tips in minimally invasive gynecologic surgery.
- Utilize current gynecologic surgical techniques, including laparoscopy and hysterectomy, and assess indications for use and how to manage complications.
- Choose the best surgical approach to avoid unintended outcomes.
- Analyze the latest trends in minimally invasive surgery and how they impact the care of the patient.
- Discuss techniques and best practices in the operating room for minimally invasive prolapse surgeries.
- Explore the historical transition of abdominal and vaginal surgery to minimally invasive surgery for pelvic organ prolapse.
- Understand patient outcome data on minimally invasive surgeries for prolapse.
- Manage patients with urinary incontinence and pelvic prolapse.
- Understand the evidence for behavioral therapies in managing overactive bladder; discuss medications, therapy specifics, adverse events, and management.
- Understand third-line OAB therapies.
- Review evidence in the use of slings and pessaries.
- Explain lower urinary tract physiology, pelvic anatomy, and vaginal hysterectomy.
- Develop new strategies to apply in practice for the management of neoplastic disorders and non-malignant conditions.
- Evaluate the non-surgical management of malignant and non-malignant gynecologic tumors.
- Identify neoplastic disorders and non-malignant conditions.
- Discuss the philosophy of opioid-free surgery.
- Describe features of a malignant adnexal mass to better define malignant risk.
- Discuss the rational use of tumor markers to focus on most valid results.

## Infertility, Menopause, and Reproductive Endocrinology Objectives:

- Incorporate new management strategies for patients with endocrine and fertility disorders.
- Analyze advances in the field as they apply to the management of patients with endocrine and fertility disorders.
- Develop techniques to evaluate pelvic pain and bleeding, and strategies for managing them.
- Institute a therapeutic management plan for patients with non-menopause-related endocrine imbalance, as well as those who are menopausal and post-menopausal.
- Learn about all newer methods of reversible contraception.
- Recognize the major health concerns of menopausal women.

## Additional Objectives:

- Understand the impact of individual, community, and structural factors on health outcomes of patients in OB/GYN.
- Define health equity in OB/GYN care and describe the unique roles of OB/GYNs in ensuring it.
- Describe the strategies for assessing and addressing bias and health disparities in your own practice.



HARVARD  
MEDICAL SCHOOL

## Obstetrics and Gynecology 2025

Obstetrics and Gynecology 2025 is six days comprising three programs:

- Clinical Obstetrics (March 7–8)
- Minimally Invasive Gynecologic Surgery, Urogynecology, Gynecologic Oncology (March 9–10)
- Infertility, Menopause, and Reproductive Endocrinology (March 11–12)

Registrants may choose to attend (a) the full six-day course, (b) 1 two-day program, or (c) 2 two-day programs.

Course Choice	Course Tuition
<b>Full Course</b> (All three programs)	\$1,475 <b>(SAVE \$700)</b>
Full Course for Residents or Fellows	\$975
<b>Two of the three programs</b> (No discount for residents and fellows)	\$1,250 <b>(SAVE \$200)</b>
<b>One of the three programs</b> (No discount for residents and fellows)	\$725

Your tuition includes an online, downloadable syllabus.

All sessions will be recorded as they are live streamed and placed in the online course video library, so that registrants can review them at their convenience. The video library will be available to all registrants for 60 days.

For our in-person attendees, continental breakfast will be offered each morning and coffee and snacks will be available during morning and afternoon breaks.

## REGISTRATION, PAYMENT, CONFIRMATION, and REFUND POLICY

Registrations for Harvard Medical School CME programs are made via our secure online registration system. To register for this course, please visit the course website at [OBGYN.HMSCME.com](http://OBGYN.HMSCME.com).

At the end of the registration process, a \$10 non-refundable processing fee will be added to your registration. Payment is by credit card (Visa, MasterCard, or American Express) through the registration system. Postal, telephone, fax, and cash-payment registrations are not accepted. All fees shown in USD.

Upon receipt of your paid registration, an email confirmation will be sent to you. Be sure to include an email address that you check frequently. Your email address is used for critical information, including registration confirmation, evaluation, and certificate. Refunds, less an administrative fee of \$75, will be issued for all cancellations received two weeks prior to the start of the course. **Please do not make non-refundable travel arrangements until you have received an email confirming your paid registration.** Refund requests must be received by email. No refund will be issued should cancellation occur less than two weeks prior. "No shows" are subject to the full course fee and no refunds will be issued once the course has started.

## INQUIRIES

Send email to: [CEPrograms@hms.harvard.edu](mailto:CEPrograms@hms.harvard.edu)

## ACCREDITATION

In support of improving patient care, Harvard Medical School is jointly accredited by the Accreditation Council for Continuing Medical Education (ACCME), the Accreditation Council for Pharmacy Education (ACPE), and the American Nurses Credentialing Center (ANCC), to provide continuing education for the healthcare team.

## PHYSICIANS

The Harvard Medical School designates this live activity for a maximum of 44.00 *AMA PRA Category 1 Credits*™. Physicians should claim only the credit commensurate with the extent of their participation in the activity.

- Full Course: a maximum of 44.00 *AMA PRA Category 1 Credits*™
- Clinical Obstetrics (March 7–8): a maximum of 15.25 *AMA PRA Category 1 Credits*™
- Minimally Invasive Gynecologic Surgery, Urogynecology, and Gynecologic Oncology (March 9–10): a maximum of 14.75 *AMA PRA Category 1 Credits*™
- Infertility, Menopause, and Reproductive Endocrinology (March 11–12): a maximum of 14.00 *AMA PRA Category 1 Credits*™

## RISK MANAGEMENT

This activity meets the criteria of the Massachusetts Board of Registration in Medicine for 9.25 credits of Risk Management Study. Please check your individual state licensing board requirements before claiming these credits.

CANADIAN AND EUROPEAN ACCREDITATIONS: Please see course website.

## COURSE DESCRIPTION

Update in Obstetrics and Gynecology provides comprehensive reviews of the most important advances in obstetrics and gynecology and guidance to incorporate them into general practice. Education is practical and results focused, designed to help providers of women's health optimize management of the clinical situations that occur throughout the female lifecycle.

Lectures, interactive discussions, and skills advancement sessions are taught by the most respected leaders in OB/GYN. Attendees can customize their learning experience to align with their practice needs, opting to participate in one, two, or all three programs that constitute this course: (1) Clinical Obstetrics; (2) Minimally Invasive Gynecologic Surgery, Urogynecology, and Gynecologic Oncology; (3) Infertility, Menopause, and Reproductive Endocrinology. Participants will have ample time with faculty for discussion and questions.